

Our aims are to:-

- Understand & highlight actions to meet the needs of NCN population
- Ensure sustainability of core GP services & access arrangements that meet the reasonable needs of local patients including any agreed collaborative arrangements
- Ensure that patient's planned care needs are met through prudent care pathways, facilitating rapid, accurate diagnosis & management & minimising waste/ harms. To highlight improvements for primary care/secondary care interface.
- Provide high quality, consistent care for patients presenting with urgent care needs & support the continuous development of services to improve patient experience, coordination of care & the effectiveness of risk management. To address winter preparedness & emergency planning.
- Deliver consistent, effective systems of Clinical Governance & Information Governance.
- Address other Locality specific issues



Aneurin Bevan University Health Board

Delivering Care Closer to Home

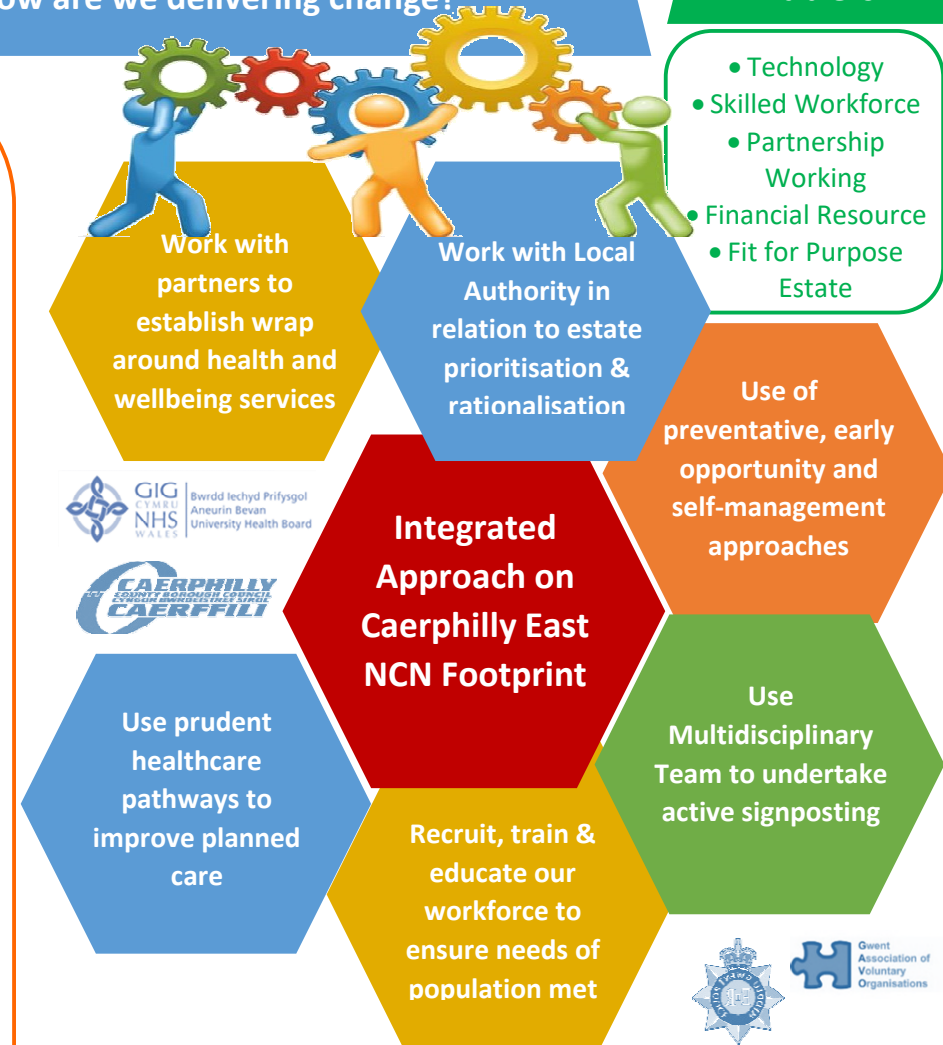


Caerphilly East Neighbourhood Care Network Plan – 2018/19

What are we doing?

- Provide easily accessible “place based” health and social care to the citizens of Caerphilly East.
- Work with providers to ensure health and social care services are sustainable.
- Continue developing primary care teams including traditional GP, DN and HV roles as well as any new roles. There should be excellent communication within the team with minimal or no “hand-offs”.
- Utilize new primary care roles to help facilitate accessible health care. Where appropriate, these should be part of “place based working”. Roles could include; Social prescriber / Practice based pharmacist / First contact physiotherapist / Mental health worker / Primary care audiologist / Primary care paramedic / Primary care OT/ Social worker.
- Ensure appropriate utilization of local services such as community pharmacy and 3rd sector services
- Ensure appropriate utilization and easily accessibility of specialist roles such as Diabetic Specialist Nurse, Heart Failure Nurse, and Palliative Care Nurse Specialist.
- Utilize appropriate preventative services to keep citizens well including influenza immunization / childhood immunization / smoking cessation services / weight management services / exercise schemes
- Ensure appropriate utilization of current high quality health and social care estate.
- Waste Management - Reduce medicines waste and safety concerns relating to repeat prescribing systems
- Use data/evidence to inform decision making.
- Use IT/ technology to enhance/improve service delivery.

How are we delivering change?



How will we know if we have made a difference?

Primary Care / NCN Dashboard Measure Monitoring