

The Strategic Programme for Primary Care Stakeholder Newsletter

Spring 2022



Dear Colleague,

Welcome to the first Strategic Programme for Primary Care (SPPC) newsletter of 2022, updating you on the work being carried out by the SPPC. Newsletters are published quarterly and if you want to ensure you receive these, please ask to be added to our mailing list at SPPC@wales.nhs.uk.

**National Director and Strategic Programme Lead
for Primary and Community Care**

Who's who

The SPPC team is made up of specialist leads, clinicians, and experts in many areas and supported by a national Programme Management Office (PMO), you can read more about our team here and we will spotlight different members in future newsletters.

National SPPC Leads

Sue Morgan is the National Director and Strategic Programme Lead for Primary and Community Care. Sue's focus is to drive the implementation of the Primary Care Model for Wales and it's fit within the whole system.

Zoe Wallace is the Programme Director SPPC / Director of Primary Care, PHW. Zoe coordinates and aligns the programme management functions across the Primary Care Hub and the SPPC team.

Alan Lawrie is the National Professional Advisor for Primary and Community Care and lead for the Accelerated Cluster development and Community Infrastructure Programmes.

Dr Karen Gully is the National Professional Advisor for Primary and Community Care, Karen provides support and advice on the Accelerated Cluster Development programme in the SPPC.

Dr Alastair Reeves is the National Clinical Lead for Primary and Community Care. Alastair leads the clinical governance work plan, provides clinical insight across the team and coordinates the contributions from the All Wales Assistant Medical Directors Group.

Kerrie Phipps is the National AHP Lead for Primary and Community Care, Kerrie's role supports and leads on the Community Infrastructure programme and Chairs the newly formed All Wales Primary & Community Care Allied Health Professions (AHP) Leadership Group.

Chiquita Cusens is the National Lead Nurse for Primary and Community Care, Chiquita supports and leads on the Community Infrastructure programme and Chairs the All Wales Senior Nurse Peer Group.

For more information visit [Who's involved here](#)

The **PRIMARY CARE MODEL FOR WALES (PCMW)** describes how care will be delivered locally, now & in the future, as part of a whole system approach to deliver A Healthier Wales.



PCMW outcome 1
An informed public



PCMW outcome 2
Empowered communities



PCMW outcome 3
Support for wellbeing, prevention & self-care



PCMW outcome 4
Local services



PCMW outcome 5
Seamless working



PCMW outcome 6
Safe & effective call handling, signposting & triage



PCMW outcome 7
Quality out-of-hours care



PCMW outcome 8
Directly accessed services



PCMW outcome 9
Integrated care for people with multiple care needs



PCMW outcome 10
Cluster estates & facilities support multi-professional working



PCMW outcome 11
Cluster IT systems enable cluster communications & data sharing



PCMW outcome 12
Ease of access to community diagnostics supporting high quality care



PCMW outcome 13
Finance systems designed to drive whole-system transformative change

The Strategic Programme for Primary Care is an All-Wales Health Board-led programme that works in collaboration with Welsh Government and responds to A Healthier Wales. The programme was launched in November 2018 and the following provides a summary overview of the focus to date.

2018/19

Programme launched

National PC Conference (November)

Programme architecture, management and priorities established

2019/20

Establishing work streams

Winter & Cluster Planning

Programme orientated to support national Covid-19

response: toolkits & webinars

2020/21

Covid-19 response

Deliverables across the six work streams

Winter, IMTP / Cluster Plans

Urgent Primary Care Pathfinders

2021/22

Recovery Four Priorities:

Accelerated Cluster Development

Urgent Primary Care

Community Infrastructure

Mental Wellbeing

2022/23

Reset, Recover & Transform

Accelerated Cluster Development

Urgent Primary Care

Community Infrastructure

Mental Wellbeing

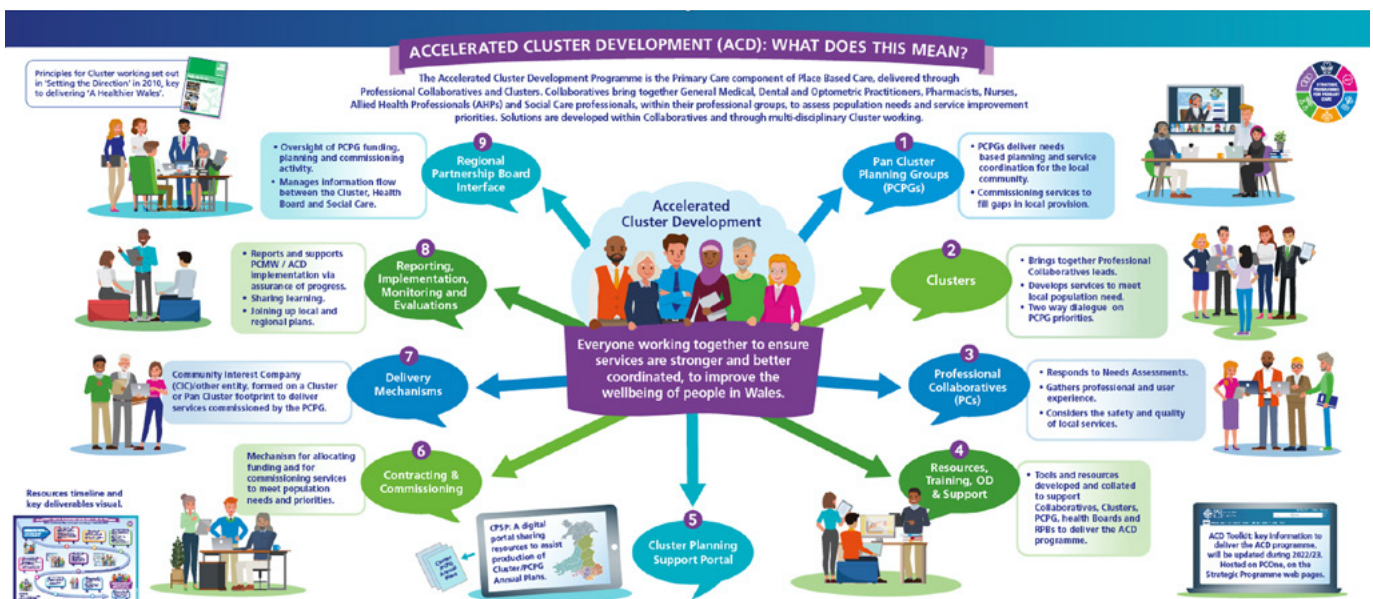
So what does the SPPC do?

We work with stakeholders to develop products that support the implementation of the Primary Care Model for Wales.

Most recently published is the – Primary and Community Care Allied Health Professions (AHP) Workforce Guidance: Organising principles to optimise utilisation. This guidance is a call for the whole health and social care system to implement recommended organising principles to optimise the use of the allied health professional workforce in Primary and Community Care. Its intended audience is clinicians, service managers and leaders, and to everyone else involved in the planning and delivery of clinical services.

Also published was the High-Level Primary and Community Care Escalation Framework this standardised framework, designed in collaboration, enables reporting of pressures levels for primary and community care services. The purpose is to encourage whole system reporting via the all Wales safety huddles.

We have a handy library of products published by the SPPC. You can find it [here](#).



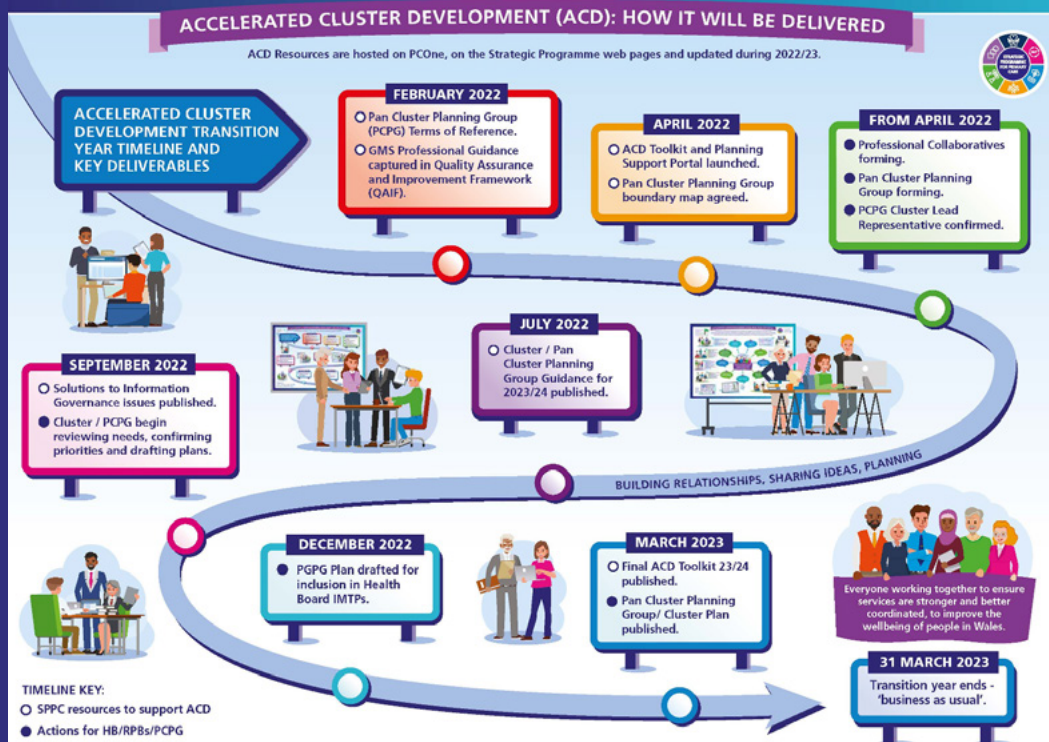
A key priority of the Strategic Programme for Primary Care is the Accelerated Cluster Development (ACD) Programme to ensure more rapid implementation of the PCMW and to address system barriers.

The ACD Programme seeks to clearly define the purpose and the function of clusters. Linking this back to the original policy intent, there is a clear need to distinguish between the planning functions that clusters need to be central to and the delivery of services at a cluster level. Defining the extent of their planning and population needs assessment (PNA) function, which must be linked to the wider health and care system

and involve a wide range of stakeholders is part of the solution which ACD is about. In terms of their delivery function, it is imperative to be very clear about what a cluster is expected to deliver in actual service terms.

The Programme includes the introduction of Professional Collaboratives (PCs) and Pan Cluster Planning Groups (PCPGs) to broaden and strengthen clinical engagement and to increase the influence from the community to Regional Partnership Board (Health Board and Local Authority) decisions (RPB). A clearer separation of planning and delivery functions will be developed.

Accelerated Cluster Development Toolkit is a collection of information and adaptable resources for stakeholders who will be supporting and driving forward the implementation of the ACD programme.



[Access it Here: Accelerated Cluster Development Toolkit - Primary Care One \(nhs.wales\)](https://www.nhs.uk/primarycareone/accelerated-cluster-development-toolkit)

Upcoming events

The best way to keep up to date with any events is ask to be added to our mailing list SPPC@wales.nhs.uk and regularly check our webpages below.

You can visit our events page to watch recordings from previous events and find out about any upcoming ones.

Want to find out more?

Scan the QR code
Email: SPPC@wales.nhs.uk
Visit: www.Primarycareone.nhs.wales



Strategic Programme for Primary Care

An All-Wales Health Board-led programme that works in collaboration with Welsh Government and responds to A Healthier Wales.