

November 2022

Primary Care Division



GIG
CYMRU
NHS
WALES

Iechyd Cyhoeddus
Cymru
Public Health
Wales

Autumn Newsletter

Transformation | Prevention | Dental Public Health

The Primary Care Division is part of the Health and Well-being Directorate of Public Health Wales. Our work is aligned to supporting transformation and prevention in primary care and dental public health improvement. Contact us by visiting our website [Primary Care One: primarycareone.nhs.wales](https://primarycareone.nhs.wales), on [@PrimaryCareOne](https://twitter.com/PrimaryCareOne) or for further information and queries, or to give feedback, please contact PrimaryCare.One@Wales.nhs.uk

| Prevention

Developing a coordinated approach to prevention in primary and community care

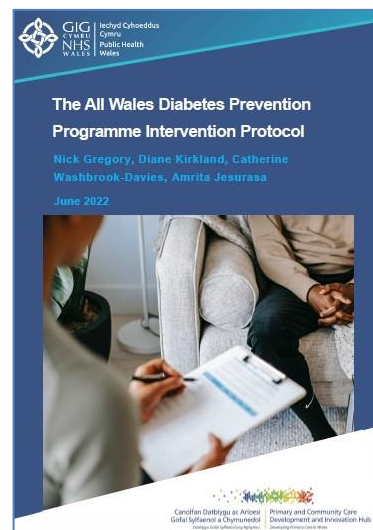
Obesity Prevention

Following completion of the [Primary Care Obesity Prevention Action Plan](#) a public facing version of the plan was published in July. Plans on a page have been produced for all 4 aims and the implementation of the actions is progressing, notably including:

- Establishment of a Healthy Weight Conversations sub-group to take forward the development of training
- Establishing links and plans for work with the Musculoskeletal and Maternity & Neonatal Clinical Networks to take forward integration of the primary care element of the All Wales Weight Management Pathway into these pathways
- Development of a draft communication and engagement plan
- Scoping of behavioural interventions to support delivery of the action plan
- Inputting into GMS contract and wider primary care alignment fora to support work on increasing measurement of height, weight and subsequent BMI calculation
- Establishing a Strategic Programme for Primary Care (SPPC) funded Obesity Prevention Peer network to support implementation, monitoring, evaluation and shared learning.

Diabetes Prevention

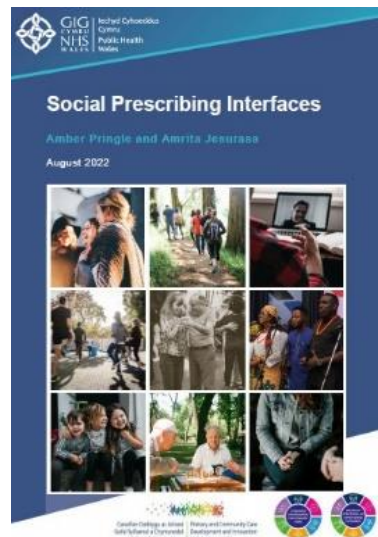
The [All Wales Diabetes Prevention Programme \(AWDPP\)](#) was formally launched in Diabetes Awareness week in June. The programme is initially being rolled out to 14 primary care clusters across Wales (2 per health board area; 92 GMS Practices), with additional clusters anticipated to adopt the model through alternative funding streams. To support the launch, a [video outlining the AWDPP](#), [frequently asked questions \(FAQs\)](#) and the [AWDPP protocol](#), outlining the delivery approach for the programme, were published via the PHW website, and the Deputy Minister visited Swansea Bay UHB headquarters to speak to both professionals and patients, with media coverage of the launch. Clinics have commenced in six out of seven health boards by the end of November with Hywel Dda clinics due to commence early in the new year.. A compendium of resources to support delivery has been produced. Initially, feedback has been positive, and work is underway to develop a dashboard to highlight progress with implementation.



Process, value-based and outcome evaluation plans are developing well and proactive work to develop an audit plus module, support equitable access and uptake of the programme, develop quality statements and support workforce development is underway.

Social Prescribing

The Primary & Community Care Innovation and Development Hub (PC Hub) have supported Welsh Government with their all-Wales framework for social prescribing which is now out for consultation and due to be published early in the new year. [A social prescribing interfaces paper](#) was published by the PC Hub in September to support understanding of the interactions of social prescribing with existing health & wellbeing services and activities. The report identifies 5 key recommendations to support the development of social prescribing in Wales.



Work is progressing on a grant collaboration with the University of South Wales to develop a glossary of terms for social prescribing. The PC hub is inputting into the development of a key skills framework for social prescribing, which is being led by Health Education and Improvement Wales (HEIW). Work on a new resource to support referrers with their understanding of how social prescribing can meet health and wellbeing needs, is underway.

| Transformation

Supporting our partners in the delivery of national plans for the transformation of primary and community care in Wales

Primary Care Model for Wales (PCMW)

A PCMW / [Accelerated Cluster Development \(ACD\) monitoring and evaluation plan](#) has been formulated, supported by [Cluster Development Framework \(CDF\)](#),

defining anticipated outcomes and setting out implementation maturity descriptors for PCMW and success criteria for ACD. A Cluster peer review process has been designed and operationalised for Q3 rollout via pilot reviews in each Health Board / Regional Partnership Board area to be chaired by a Health Board Vice Chair. Proposals have been made to the Strategic Programme for Primary Care to support the development of a self-reflection tool and key indicator dashboard to further support and monitor implementation progress during post-transition year.



Accelerated Cluster Development (ACD)

A series of facilitated workshops have been commissioned, delivered and reported for community pharmacy, optometry, nursing and AHPs. [A Learning and development opportunities for new and existing cluster leads discussion paper](#) has been completed. [The ACD Toolkit](#) has been co-developed and published; PHW contributed to chapter 6: *Planning*; chapter 7: *Evaluation* and chapter 8: *Engagement*. [The Cluster Planning Support Portal \(CPSP\)](#) has been developed and published, ready to support next planning cycle. [The Population Health Information by Topic \(PHIT\)](#) index is online, aiming to guide professional collaborative advice on health improvement priorities. The Primary Care One website has been enhanced with a new [Tools section](#) and other content in support of the Strategic Programme for Primary Care, PC Hub, ACD and wider transformation activities.

ACC Professional Collaboratives Learning and OD

The team commissioned a [Learning and development opportunities for new and existing cluster lead roles: A discussion paper \(Published April 2022\)](#) from PCC to inform the development of thinking to establish an ACD Professional Collaboratives Learning and OD programme. The discussion paper outlined the existing and planned learning opportunities for cluster lead roles across Wales. The paper concluded with a proposed action plan to address gaps in learning, which would support the ACD programme as it evolved. The proposed action plan was reviewed for implementation through the [Strategic Programme for Primary Care](#) and [the Multi-professional Education and Training in Primary and Community Care Programme led by HEIW](#).

Greener Primary Care

Following evaluation of the pilot, the scheme was launched in June 2022 with the Minister for Health and Social Services, Minister Climate Change and WBfG Commissioner support. To date over 100 practices across all settings have registered with the scheme. Awards will be granted in Q3. Funding has been secured from the Climate Emergency National Programme to develop a Greener Primary Care Yearbook to celebrate year 1 of the award scheme and identify case studies for sharing.



The award scheme links to GMS Quality Improvement actions, is included in the Royal Pharmaceutical Society 2025 Goals and is being considered for inclusion in the Optometry contract negotiations 2022/23. The scheme was featured in the most recent national publication of [Optometry Today](#). A presentation about the award scheme was given at the national Royal Pharmaceutical Society conference in London in November and a presentation was made at the [AWMSG Best Practice Day](#) on the environmental impact of inhalers.

Other climate change activity

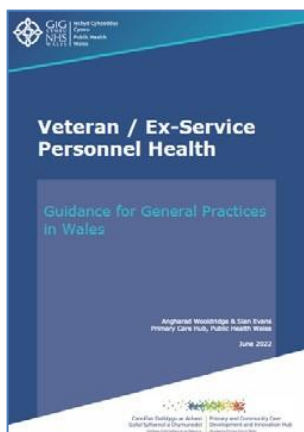
Primary Care Division attendance, participation and ongoing public health advice offered to the Approaches to Healthcare sub-group of the Climate Emergency National Programme Board. System leadership and behavioural insights offered for safe use and disposal of inhalers across Wales. Discussion paper drafted and evidence review commenced to support this work.

Optometry

The PC Hub have provided advice and guidance to an HEIW Optometric Fellow producing an All Wales Eye Health Needs Assessment. Attendance, participation and ongoing public health advice offered to the Optometry Contract Reform Implementation Board and relevant sub-groups.

Pacesetters and SPPC Fund

The team lead on the production of the Pacesetter Programme 2020-2022 End of programme report that was published in August and brings to a close the Pacesetter Programme across Wales. The team have supported the SPPC Programme Management team in articulating the SPPC Funded projects benefits and outcomes/ outputs, producing a report for National Primary Care Board (NPCB) in August and a six-month monitoring and performance report to capture outputs, benefits and expenditure over Q1/2 was presented to NPCB in November to help inform future investment prioritisation.



All Wales Practice Manager Network (Gwella)

Practice Manager Gwella site established and populated with content. Demonstration to volunteer Practice Managers undertaken to test site design and initial content. Working with volunteers to shape content and aim for launch at All Wales Practice Manager Conference in November 2022.

Veterans and Ex-Service Personnel Health

The Ex-Service / Veterans Health – [Guidance for General Practices, 2022](#) provides detail of the duty on all general practices in Wales to provide care, signpost to and/or refer to relevant services where appropriate any veteran or veteran family member registered with the practice.

| Dental Public Health

Supporting and leading oral health and dental services improvement in Wales



Oral health improvement

A new data collection tool for Designed to Smile, created by PHW Dental Public Health team, was utilised by all local health boards in July and August 2022 to submit their annual returns. Feedback was very positive that this has substantially reduced the number of hours and staff involved in the submissions. PHW DPH team has produced the annual report which will be available at <https://phw.nhs.wales/services-and-teams/designed-to-smile/>

Oral health intelligence (including dental epidemiology)

The Training and Calibration (T&C) event for 5 year old children's survey in 2023/24 academic year took place on 5-7th of October. Many thanks ABUHB Community Dental Service that hosted the event in their area and liaised with local schools for calibration part of the Training and Calibration. Health Boards' Community Dental Services will start examining children to collect data from the year 1 school children. Dental Public Health team will soon start planning for survey of 12 year old children.

General Dental Service (GDS) Reform Programme

The General Dental Service (GDS) Reform Programme structure has been established and approved by the Dental Strategic Oversight Group. The contract variation agreement for 2022/23 received good sign up by practices and progress is being monitored by the NHS Business Services Authority (NHSBSA) and the Programme work streams, with quarterly reporting into the Dental Strategic Oversight Group. Work continuing around workforce and training, evaluation including Principles of Care evaluation and communication activities especially targeted towards the public and the dental profession.

Dental public health advice and support

PHW Dental Public Health team continues to provide dental public health advice and support to its partner organisations especially Welsh Government, Health Boards, HEIW, NHSBSA and others. PHW Dental PH team has submitted a written response to the Senedd's call for evidence in the Inquiry into Dentistry.

