



Aneurin Bevan University Health Board Delivering Care Closer to Home



Monmouthshire South Neighbourhood Care Network Plan – 2018/19

Our aims are to:-

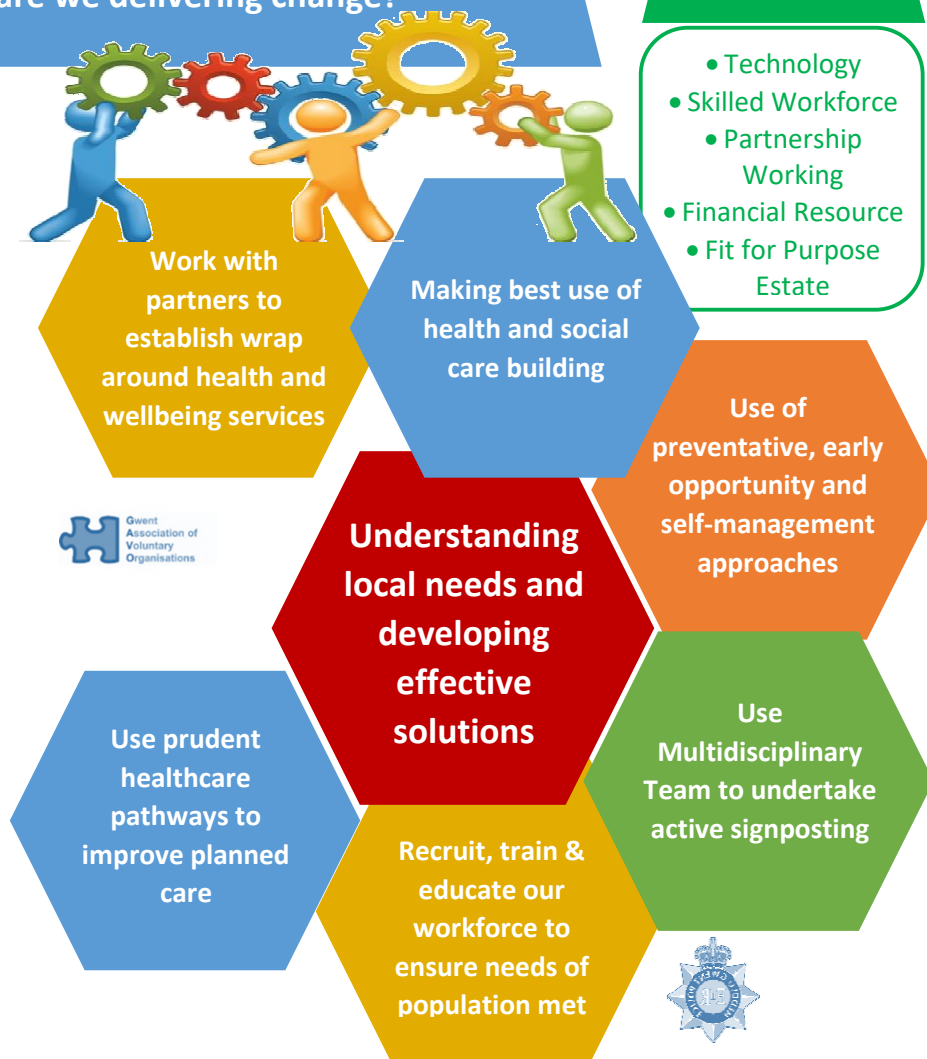
- Improve the health and wellbeing of the local population
- Support people to stay well, lead healthier lifestyles and live independently
- Reduce health inequalities
- Support the Clinical Futures Strategy in primary and community care by delivering Care Closer to Home:-
- Ensure that services have the flexibility to meet individual needs
- Improve access to specialist expertise
- Provide a positive experience for patients and carers
- Ensure a supportive working environment and career development opportunities for our staff
-

Design by Caerphilly South NCN team: Alun, Jon, Eira and Stella

What are we doing?

- Regularly reviewing local needs to identify priorities and develop effective solutions
- Developing primary care teams using the Primary Care Model for Wales built around traditional GP, District Nurse and Health Visitor roles
- Introducing new primary care roles to provide easier access to local services. Current examples include Social prescribers, practice based pharmacists, physiotherapists, mental health workers, primary care audiologists, paramedics, occupational therapists and social workers.
- Increasing access to specialist roles in the community including Diabetic Specialist Nurse, Heart Failure Nurse, and Palliative Care Nurse Specialist.
- Working to increase uptake of preventative services to keep citizens well including influenza immunization / childhood immunization / smoking cessation services / weight management services / exercise schemes
- Developing clinical pathways to improve patient experience and service quality
- Building a strong social navigation system to support community engagement
- Finding and championing local community initiatives

How are we delivering change?



How will we know if we have made a difference?

We review health and wellbeing outcomes regularly and we learn from feedback from patients, carers and staff